

SENSORS FOR LPG & NH3

- ✓ OEM
- ✓ CUSTOM
- ✓ OFF-THE-SHELF

	e-Dial	e-Temp	Sensors	Float	Flow	OPD
DOT/ASME Cylinders			✓	✓		
Motor Fuel / RV ASME			✓	✓		
Fork Lift Cylinders				✓		
Rotogauge Replacements	✓	✓		✓		
Bobtails	✓	✓	✓	✓		
Transports	✓	✓	✓	✓		
Bulk Storage Tanks	✓	✓	✓	✓		
Pipelines					✓	
20/30lb Cylinders				✓		✓
Accumulators			✓	✓		

100+ years of continued development of measurement and communication technologies to measure liquid levels in a wide array of applications, including harsh environments.



Got a liquid level challenge? You're in the right place

- Strong team of senior-level personnel with sensor development expertise throughout the organization
- Extensive engineering design and validation prowess
- High priority in protecting internal development efforts with patents and trade secrets
- Design for hazardous location applications (UL, ATEX and IECEx) expertise
- Strong acquisition and integration experience including expanding product offerings to a global array of customers
- Deep strength in engineering capabilities, including over 100 engineers throughout the organization
- In-house equipment automation capabilities including design, build, install and optimization
- Global supply chain with specific commodity expertise backed by a professional supplier quality organization

Sensing Technologies

- High speed guided wave radar
- Capacitance
- Magnetic reed chain (AKA: Reed switch probe)
- Magnetic field sensing (Hall & MR)
- Thick film / advanced matrix film
- Spiral and mechanical float

Communication Technologies

- **Analog:**
Resistance, voltage, 4-20mA and PWM
- **Digital:**
485, CAN, LIN, Modbus, Ethernet
- **Special protocols:**
Proprietary, 1-wire, SAE J1939, NEMA 2000
- **Wireless:**
BLE

A new generation is here!

Since the initial acquisition of Rochester Gauges in May 2018, additional companies have been acquired that have been very complementary in building a global sensor brand.

Measurement for LPG & NH3 applications



e-Temp



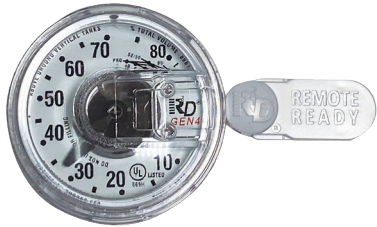
e-Dial

e-Temp / e-Dial

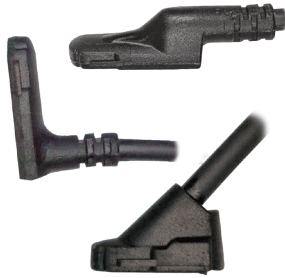
Bobtails, Transports, Bulk Storage Tanks

Function: Remote transmission and reading of liquid levels

Features: Analog/Digital Outputs, Weatherproof, Snap-fit



Gen 4 Dial



9704 / 9705

SENSORS

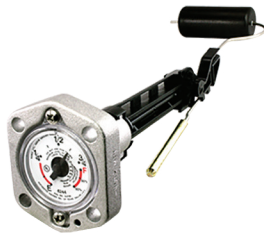
Transports, Bulk Storage Tanks, Bobtails, DOT/ASME Cylinders, Motor Fuel / RV, Accumulators

Function: Continuous reading of liquid levels

Features: Non-contact, Remote read, Hall Effect, Analog/Digital Outputs, Weatherproof, Snap-fit



6200



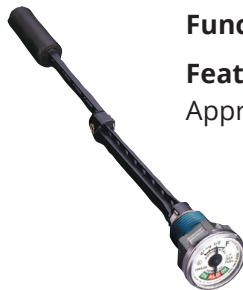
62244-04



M6300LP



P6293



7384

MECHANICAL FLOAT ARM

DOT/ASME Cylinders, Rotogauge Replacement, Fork Lift, Bobtails, Transport, Bulk Storage Tanks, Motor Fuel / RV, Fork Lift Cylinders, Accumulators, Options for DME

Function: Low-cost reading of liquid levels

Features: Corrosion and humidity resistant, Reliable, Approvals available



OPD



6286



A6200 / A6400

SPECIAL APPLICATIONS

Pipelines, 20 / 30 lb Cylinders, NH3 Service

Function: Flow, OPD, Gauging farm tanks

Features: T-mounted (6286), Shows liquid level (OPD), SS for high corrosion resistance (6286, A6400)



Research, Development & Engineering Capabilities

- 3D modeling, Stress Strain, Vibration, Fatigue, Thermal, Mold Flow and RF/Electromagnetic Simulation — SolidWorks, AutoDesk Inventor, AutoCAD
- Schematic Capture, Simulation and PCB Layout — Proteus Design Suite
- Customization and Application Configuration
- Prototyping — 3D printing, 5-axis CNC machining, Stamping, Milling, Welding, Soldering, Brazing, PCB fabrication, Through hole and SMT assembly
- Testing — EMI, Thermal, Vibration, Shock, Pressure, Vacuum, Electrical, Functional life cycle, HALT, IPX6K/IPX9K, IK (impact), Salt fog/spray, and Chemical compatibility

Manufacturing Capabilities

- Assembly
- Ultrasonic Welding
- TIG, Plasma, Resistance & Spin Welding
- Machining
- Stamping
- Soldering
- Laser Etching and Marking
- Specialized Metal Working
- Electrical and Mechanical Product Calibrating
- Vacuum Leak Testing
- High Pressure Leak Testing
- Cleaning for Cryogenic Applications
- Overmolding
- Surface Mount and Through-hole Assembly/Test

Certifications

- Facilities are ISO 9001:2015 registered
- Warwick facility is also ISO 14001:2015 registered
- TS-16949 registration in process
- DLLS: ISO 9001:2015, ISO/IEC 80079-34:2018 (i.e. ATEX)
- CDMX: ISO 9001:2015, ISO/IEC 80079-34:2018 (i.e. ATEX)
- WRWK: ISO 9001:2015, ISO 14001:2015 (i.e. ATEX)
- BRSS: ISO 9001:2015

WORLDWIDE FACILITIES

NORTH AMERICA

DALLAS, TEXAS
11616 Harry Hines Blvd.
Dallas, TX 75229, USA

Shipping

11637 Denton Drive
Dallas, TX 75229, USA
Local +1(972) 241-2161
Toll Free +1(888) 724-0778
Fax +1(972) 845-7857 main

Customer Service

Toll Free +1(888) 723-5549

NORTH AMERICA

MEXICO CITY, MEXICO
Medidores Internacionales
Rochester SA
Calle 26-A no. 6
Parque Industrial Vallejo
San Pablo Xalpa, Tlalnepantla,
Estado de México, C.P. 54170
Tel. +52-55-3003-0970
Fax +52-55-3003-0985

ASIA

SHANGHAI, CHINA
Rochester Gauges (Shanghai) Co. Ltd.
Section D, Floor 4, Building #15
#69 Xiya Road
China (Shanghai) Pilot Free Trade Zone
Shanghai, China 200131
Tel. +86-21-5046-3933, 5046-1110
Fax +86-21-5046-3700

EUROPE

BRUSSELS, BELGIUM
6, Avenue Lavoisier
B1300 Wavre, Belgium
Tel. +32-10-24-1010
Fax +32-10-22-8139

WARWICK, UK

Hermes Close,
Tachbrook Park,
Warwick,
CV34 6UF,
United Kingdom
Tel. +44(0) 01926 466700

