

New Lift Truck Cylinder Gauge

- Lowest Possible Defect Rate
- Less Warranty Requirements

**New Plastic Construction
Improves Reliability & Accuracy**

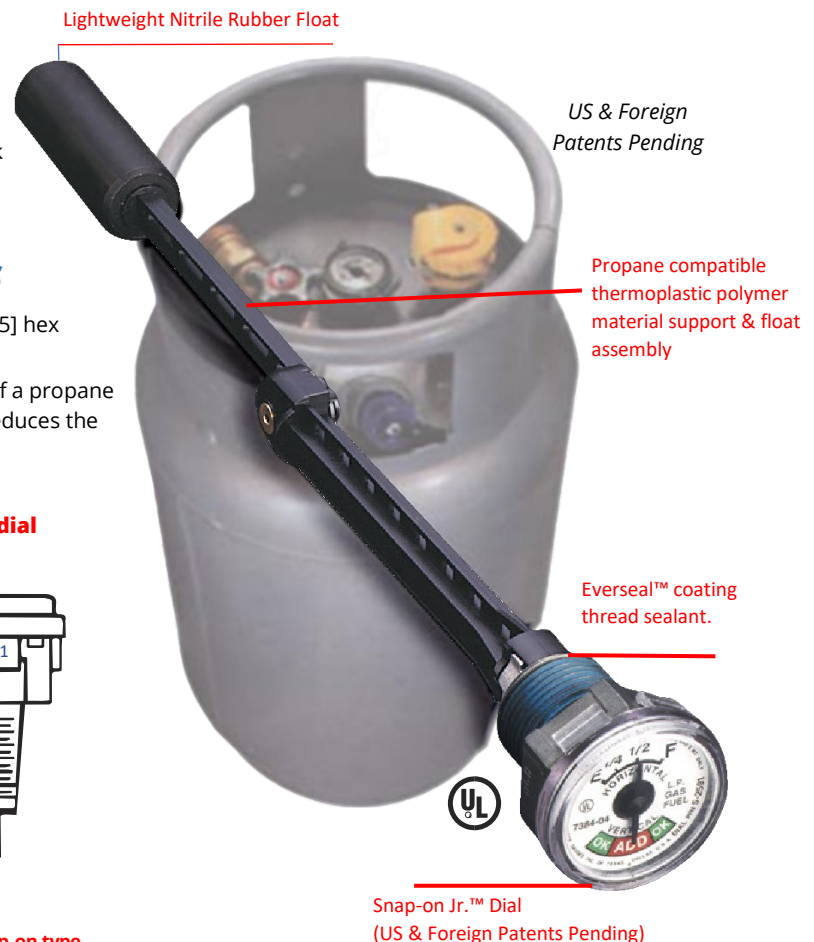
Applications

The new 3/4" Male NPTF Junior™ gauge is designed for use in all 20#, 35# and 43.5# DOT lift truck cylinders. This gauge measures the liquid contents of a horizontally mounted lift truck cylinder. The gauge has a second scale for use when the tank is stored vertically which reads "OK" or "ADD".

General Information & Features

The gauge head accepts a snap-on Junior™ dial and has 1 3/8" [35] hex wrenching flats.

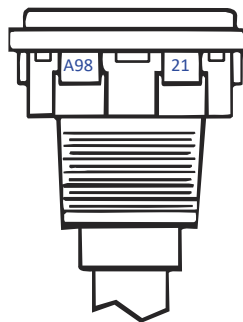
The gauge support, center shaft and float arm are constructed of a propane compatible thermoplastic polymer material. This construction reduces the number of parts and improves reliability and accuracy.



Conveniently located slots allow for easy removal of dial



Dial S/A: 5714S02591



Typical gauge with snap-on type direct-reading dial

General Specifications*

Temperature Range

Standard range -40°F to +158°F, -40°C to 70°C.

Shock

Designed for lift truck and portable cylinder service applications.

Vibration

Designed for lift truck and portable cylinder service applications.

Working Pressure

375 psig [25, 8 Bar]

Approvals

UL listed for LP Gas service accessory.

Materials of Construction*

Head

Zinc die-casting.

Support, Centershaft, Float Arm & Gears

Thermoplastic polymer.

Float Bulb

Nitrile rubber.

Magnet

Alnico.

Direct Reading Dials

Ultrasonically welded, hermetically sealed polycarbonate

*Materials and specifications are subject to change without notice.

Pressure ratings subject to change due to temperature and other environmental considerations

RochesterSensors.com

Since the suitability of these products depends upon a wide range of factors not in our control, Rochester Sensors expects and understands that you will conduct the testing and evaluation necessary to determine that these products are suitable for your application. Whilst every effort is made to ensure the above details are correct at the time of printing, Rochester Sensors reserves the right to make material changes, and or technical changes without notification. © Rochester Sensors. 11/23 Rev 1