

Magnetic Liquid Level Gauges



Applications

The 8500 Series Senior gauges are specially designed for low-pressure, ambient temperature use in potable water tanks and holding tanks for gray or waste water on boats and recreational vehicles. Aircraft de-icing liquids and thylene glycol/water mixtures in radiators have been successfully measured with these gauges.

General Information & Features

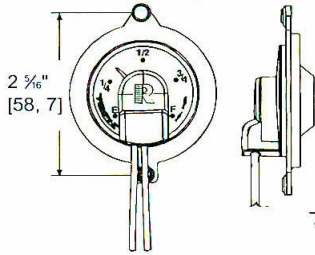
The 8500 Series gauges are available in gear-action models for top, center-line or angle mounting or in lever-action models for centerline mounting only.

The standard float is nitrile rubber. Polypropylene (FDA approved for potable water service) and stainless-steel floats are also available. Please specify your choice. The gauge is attached to a Senior flange with 2 ½" bolt circle through use of four, ¼" – 28 8/16" long bolts. The gasket is Buna-N.

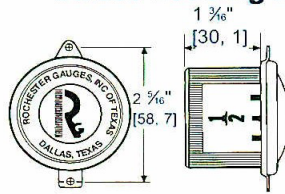


Model#	Action	Mounting	Dial, Sender or Switch Data
8540	Gear	Top	Senior TwinSite® Sender in choice of 0-30, 0-90-, or 240-30-Ohm ranges. Direct-reading fractional dials may also be used.
8543		C/L or Angle	
8550		Top	Senior S.P.S.T., ½ AMP, standard. Many other switches available, see DS-364.
8553		C/L or Angle	
8560		Top	Senior side-reading fractional dial.
8580		C/L or Angle	#5002S00062 Senior direct reading
8583			
L8543	Lever	C/L	Senior TwinSite® Sender P5816S02619.
L8553			Senior S.P.S.T., ½ AMP., Standard. Many other switches available, see DS-364.
L8583			#5002S00547 Senior Direct reading.

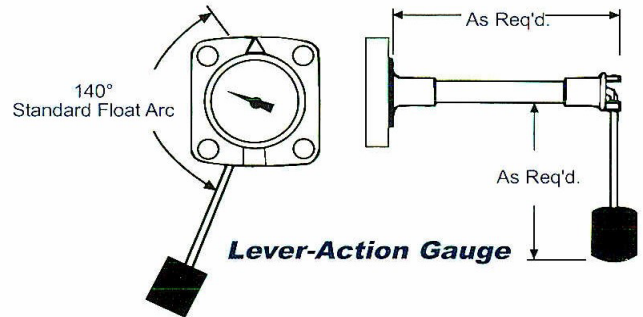
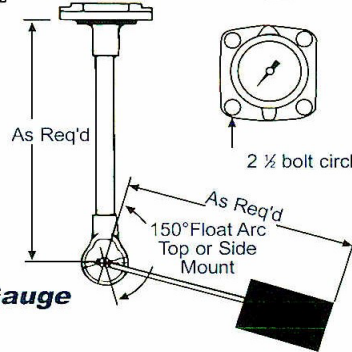
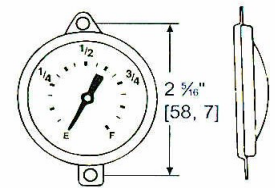
**Senior TwinSite®
Sender specify ohm range**



**#5025S00570 Senior
Direct Reading Dial**



**#5002S00062 Senior
Direct Reading Dial**



Gear-Action Gauge

Lever-Action Gauge

General Specification*

Dial Data

Dials and senders are hermetically sealed and tested in 8" HG vacuum.

Accuracy

Accuracy depends upon proper gauge sizing. Senior dials ±6%, TwinSite® dials ±10%. Accuracy may be less depending upon tank shape. Accuracy may be less near full and empty. Accuracy may be less if tank is not level. This gauge is not to be used for filling. All accuracy estimates are expressed as a percent of full scale.

Temperature

Standard operating temperature range -40°F to +158°F. -40°C to 70°C.

Humidity

Exposed portion is suitable for high humidity and marine applications.

Shock

Suitable for mobile applications.

Vibration

Suitable for mobile applications.

Power

0.5 watts maximum for TwinSite® version.

Tank Pressure

0 to 25 psig [0 to 1,7 Bar]

Approvals

UL recognized for marine water services.

Note: For installation instruction see MS-530

Materials of Constructions

Head

Injection-molded polyester plastic.

Gears Housing or Stop Adapter

Injection-molded acetal plastic.

Support Tube, Centershaft, & Float Rod

Brass.

Gears, Cross Stud, & Bearings

Stainless steel.

Float

Nitrile rubber.

Gasket

Buna-N, 0015-00004 or 0015-00079.

Drive Magnet

Plated Alnico.

Direct Reading Dials

Aluminum with Acrylic crystal.

Side-Reading Dials

Aluminum with Lexan crystal.

TwinSite® Sender

Polyamide

Mounting Bolts

Zinc-plated steel, stainless steel optional.

When Ordering, Specify:

1. Gauge model number
2. Tank diameter and riser height
3. Mounting location
4. Any listed options

*Materials and specifications are subject to change without notice.

Pressure ratings subject to change due to temperature and other environmental considerations