

SENSORS FOR LPG & NH3

- ✓ OEM
- ✓ CUSTOM
- ✓ OFF-THE-SHELF



SureSense™
Solid State Level Sensor



100+ years of continued development of measurement and communication technologies to measure liquid levels in a wide array of applications, including harsh environments.

Got a liquid level challenge? You're in the right place

- Strong team of senior-level personnel with sensor development expertise throughout the organization
- Extensive engineering design and validation prowess
- High priority in protecting internal development efforts with patents and trade secrets
- Design for hazardous location applications (UL, ATEX and IECEx) expertise
- Strong acquisition and integration experience including expanding product offerings to a global array of customers
- Deep strength in engineering capabilities, including over 100 engineers throughout the organization
- In-house equipment automation capabilities including design, build, install and optimization
- Global supply chain with specific commodity expertise backed by a professional supplier quality organization

SureSense™

COMING SOON



Ensuring your propane level sensor is:

- A robust, reliable design with no moving parts
- Excellent accuracy at low tank levels
- Wireless / Bluetooth output & local LCD
- 8-year battery life

Reliable tank levels...no guesswork!

- Works with the 6320 SureSense Cap Sensor & 6318 Wireless BLE Dials
- Shows active signals for multiple devices
- Provides % Battery Life, % Tank Volume, & any alarms on the device
- Dynamic fill mode: Faster updates during tank fills



Sensing Technologies

- Capacitance
- Radar (Free space)
- High-speed guided wave radar
- Magnetic field sensing (Hall & MR)
- Magnetic reed chain (AKA: Reed switch probe)
- Thick film / advanced matrix film
- Spiral and mechanical float

Communication Technologies

- **Analog:** Resistance, voltage, 4-20mA and PWM
- **Digital:** 485, CAN, LIN, Modbus, Ethernet
- **Special protocols:** Proprietary, 1-wire, SAE J1939, NEMA 2000
- **Wireless:** BLE, Cellular (LTE CAT-M1/NB-IoT, 2G/3G GSM) LoRa, Sigfox



BLE Dial



e-Dial



e-Temp

WIRELESS REMOTE MONITORING

Bobtails, Transports, Bulk Storage Tanks

Function: Remote transmission and reading of liquid levels

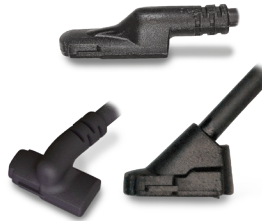
Features: Analog/Digital Outputs, Weatherproof, Snap-fit



Gen 4 Dial



TEK 822 LPG Cellular Exi Monitor



9704 / 9705

WIRED REMOTE MONITORING

Transports, Bulk Storage Tanks, Bobtails, DOT/ASME Cylinders, Motor Fuel / RV, Accumulators

Function: Continuous reading of liquid levels

Features: Non-contact, Remote read, Hall Effect, Analog/Digital Outputs, Weatherproof, Snap-fit

MECHANICAL FLOAT ARM

DOT/ASME Cylinders, Rotogauge Replacement, Fork Lift, Bobtails, Transport, Bulk Storage Tanks, Motor Fuel / RV, Fork Lift Cylinders, Accumulators, Options for DME

Function: Low-cost reading of liquid levels

Features: Corrosion and humidity resistant, Reliable, Approvals available



6200



6244-04



M6300LP

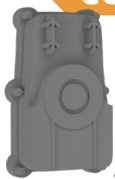


P6293



7384

COMING SOON



915



923



OPD



6286



A6200 / A6400

SPECIAL APPLICATIONS

Pipelines, 20 / 30 lb Cylinders, NH3 Service

Function: Flow, OPD, Gauging farm tanks, Tank monitoring

Features: Noninvasive ultrasonic point level sensor (915), Telemetry Tank Monitor with BLE Capability (923), Shows liquid level (OPD), T-mounted (6286), SS for high corrosion resistance (6286, A6400)



Research, Development & Engineering Capabilities

- 3D modeling, Stress Strain, Vibration, Fatigue, Thermal, Mold Flow and RF/Electromagnetic Simulation —SolidWorks, AutoDesk Inventor, AutoCAD
- Schematic Capture, Simulation and PCB Layout —Proteus Design Suite
- Customization and Application Configuration
- Prototyping — 3D printing, 5-axis CNC machining, Stamping, Milling, Welding, Soldering, Brazing, PCB fabrication, Through hole and SMT assembly
- Testing — EMI, UV, Thermal shock & cycle, Vibration, Shock, Pressure, Vacuum, Electrical, Functional life cycle, HALT, IPX6K/ IPX9K, IK (impact), Salt fog/spray, and Chemical compatibility

Manufacturing Capabilities

- Assembly
- Integrated Surface Mount and Wave Solder
- Selective Solder
- Electrical and Mechanical Product Calibration
- Specialized Metal Working
- Vacuum Leak Testing
- High Pressure Leak Testing
- Cleaning for Cryogenic Applications
- NC Wire Bending / Forming
- Ultrasonic & Spin Welding
- TIG, Plasma & Resistance Welding
- CNC Machining
- Stamping
- Brazing
- Soldering
- Laser Etching
- Overmolding

Certifications

Rochester Sensor Quality Certificates:

- ISO 9001:2015
- ISO/IEC 80079-34:2018 (i.e. Atex)
- ISO 14001: 2015
- IATF 16949:2016
- Ireland: ISO/IEC 27002 Information Security, ATEX & IECeX, RoHs, PTCRB (AT&T) & Verizon approvals. FCC, RED, CE approvals

Please check our website for Manufacturing site specific details:
rochestersensors.com/rochester-sensors-quality-policy-statement/

WORLDWIDE FACILITIES

NORTH AMERICA

COPPELL, TEXAS
Local +1(972) 241-2161
Toll Free +1(888) 724-0778
salesDLLS@rochestersensors.com

Customer Service

Toll Free +1(888) 723-5549

LATIN AMERICA

MEXICO CITY, MEXICO
Tel. +52-55-3003-0970
salesCDMX@rochestersensors.com

ASIA

SHANGHAI, CHINA
Tel. +86-21-5046-3933, 5046-1110
salesSHGH@rochestersensors.com

EUROPE

WARWICK, UK
Tel. +44(0) 01926 466700
salesWRWK@rochestersensors.com

BRUSSELS, BELGIUM
Tel. +32-10-24-1010
salesBRSS@rochestersensors.com

SHANNON, IRE
Tel. +353 (0) 61 471511
salesSHNN@rochestersensors.com

