

# Magnetel® Rough Rider® Liquid-Level Gauges for Industrial

## Applications

The M6300 series Magnetel® Rough Rider® gauges were designed to withstand the vibration and shock inherent in mobile service. Their services life in both on-highway and off-road transports, carrying liquids like crude oil, is unsurpassed. Models M6339-00011 and M6342-00011 are intended for on-highway service applications. Models M6339-0012 and M6342-00012 are intended for both on-highway and off-road, including crude oil and/or water service applications. These gauges allow a continuous reading between 5% and 95% of tank contents.

## General Information & Features

The Magnetel® Rough Rider® gauges are to be installed in the side or end of mobile tanks at the centerline. They are equipped with an exclusive spring controlled shock absorber on the float arm which substantially reduces the stress that quickly destroys conventional gauges. Angle mounting gauges are also available.

The M6339 incorporates a 4" [100mm] dial and the M6342 incorporates an 8" [200 mm] dial. When necessary, the dials are easily replaceable. Refer to price list P6300 for available types, part number, etc., as well as other replacement parts and accessories.

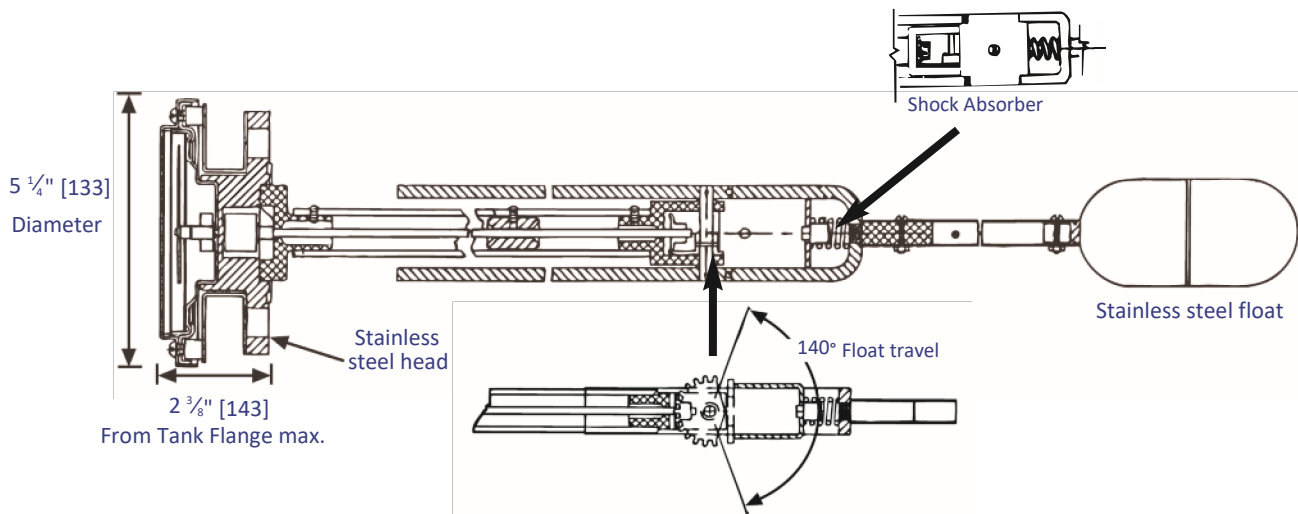
Price list M6300 includes information on materials of construction, available options, and sales and pricing policy.

The Magnetel® Rough Rider® gauges are designed for working pressures ranging from atmospheric to 450 [31 Bar] psig.



E. & O.E. ©Rochester Sensors.

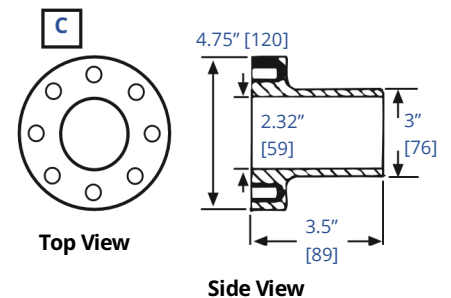
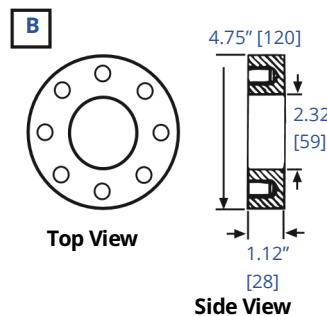
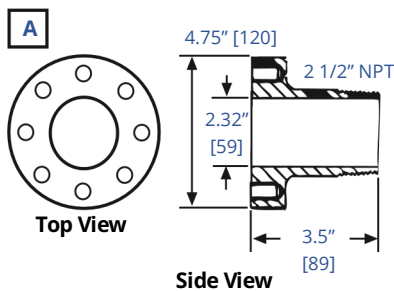
Since the suitability of these products depends upon a wide range of factors not in our control, Rochester Sensors expects and understands that you will conduct the testing and evaluation necessary to determine that these products are suitable for your application. Whilst every effort is made to ensure the above details are correct at the time of printing, Rochester Sensors reserves the right to make material changes, and or technical changes without notification.



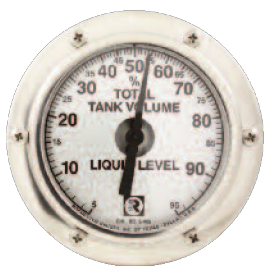
## 3.5" [89] Bolt Circle Adapters for Magnetel® Gauges

Rochester Machining Standard MS-508 – see Rochester 22 Series

Part #	Mates With	Type	Material	Thread	Dimensions
0022-00029	6300 Series	2 ½" NPT	Forged Steel	½" – 13UNC – 2B	Reference dwg. A
0022-0030		Welding			Reference dwg. B
0022-00500					Reference dwg. C



## Dial Options:



Standard 4" Dial



Standard 8" Dial

### When ordering, specify:

1. Liquid to be gauged and specific gravity.
2. Inside diameter of tank heads, ellipsoidal, semi-ellipsoidal or hemispherical.
3. Complete model number desired from price list 6300, (example M6342-11)
4. Prefix letters for available options from price list 6300.
5. If a dial other than standard is required, furnish drawing and/or details.
6. Furnish tank drawings whenever ordering gauges for angle-mounting or for installation in vertical tanks.
7. If tank mounting flange is required, order separately from chart above.

**Note:** For installation instructions see 115-820.

**U.S. Patents**  
9,304,027

E. & O.E. ©Rochester Sensors.

Since the suitability of these products depends upon a wide range of factors not in our control, Rochester Sensors expects and understands that you will conduct the testing and evaluation necessary to determine that these products are suitable for your application. Whilst every effort is made to ensure the above details are correct at the time of printing, Rochester Sensors reserves the right to make material changes, and or technical changes without notification.