



Magnetel® Liquid-Level Transmitter

Application

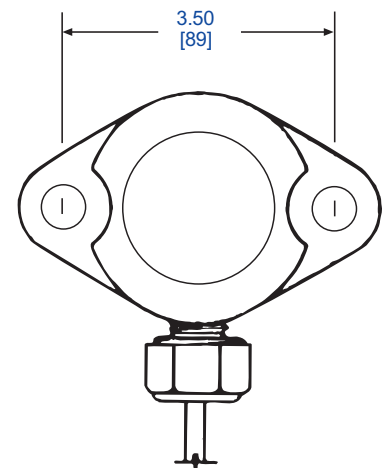
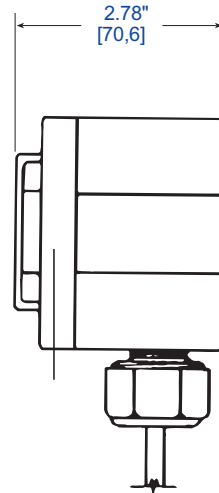
This transmitter is designed to fit Rochester model 6342 and 6360 Magnetel® Float gauges with 8" dials.

General Information & Features

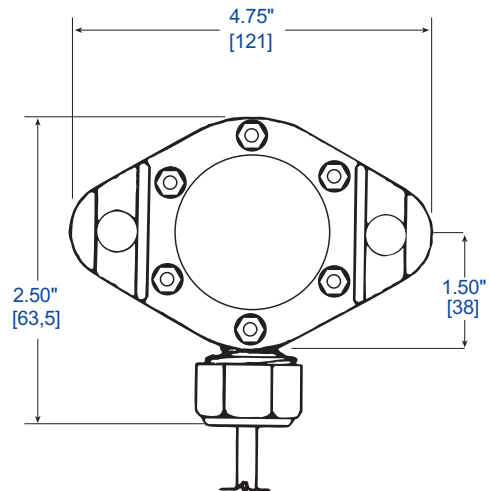
The model R6315-12 transmitter utilizes electronic circuitry to provide a current output of 4-20 mA, which is proportional to the liquid volume in a horizontal cylindrical storage tank. Transmitter should be used with intrinsically safe voltage input from a loop-power supply and safety barrier.

Nominal Outputs

% Current	Milliamps	Calibration
0	4.00	
3	4.48	Calibration Point
10	5.60	
20	7.20	
30	8.80	
40	10.40	
50	12.00	
60	13.60	
70	15.20	
90	18.40	
97	19.52	Calibration Point
100	20.00	



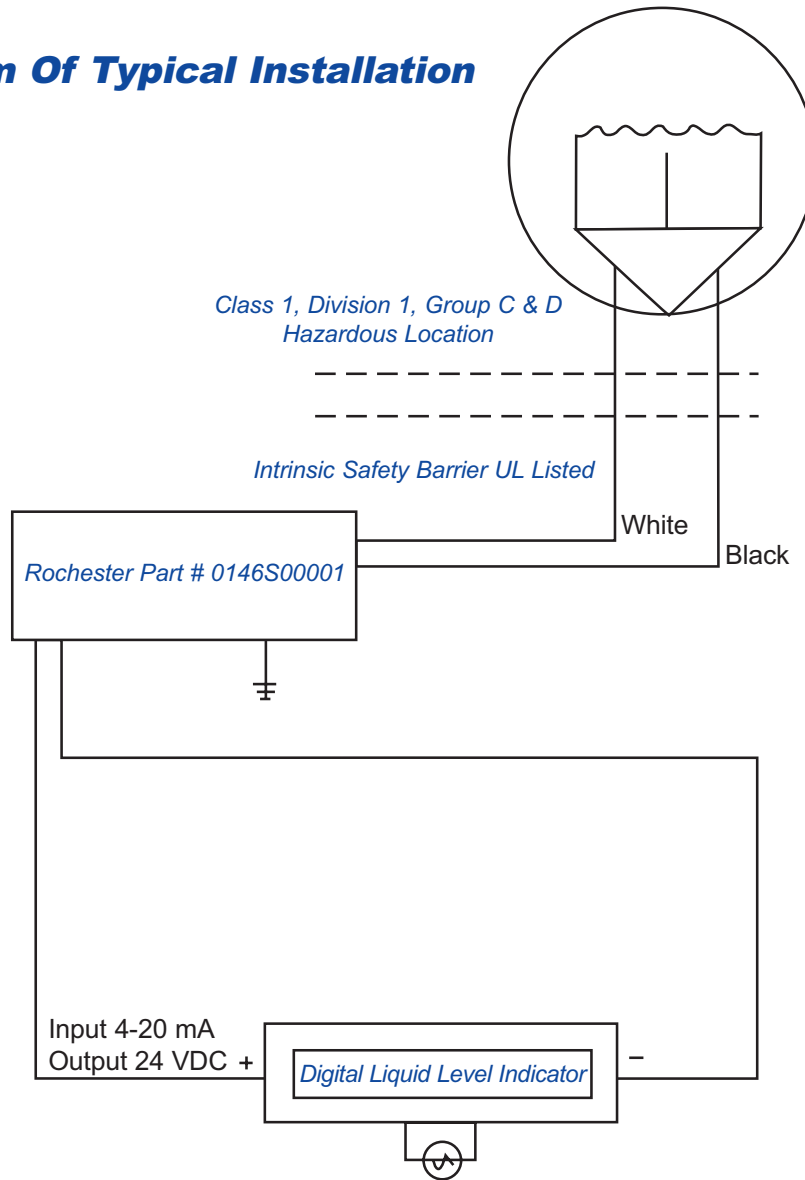
Side, front and rear views



* Materials and specifications are subject to change without notice.
Pressure ratings subject to change due to temperature and other environmental considerations.

See reverse side for dimensional data, materials of construction, performance, and advice on how to order.

Wiring Diagram Of Typical Installation



General Specifications•

4-20 mA output, 36" wire length
 24 VDC input
 Conformity $\pm 1.5\%$
 Load: 495 ohms or less
 UL Listed as intrinsically safe.

Hardware

Studs 1/2-20, 0056-00496, 2 each
 Jam nuts 1/2-20, 0044-00406, 4 each
 Stand-off post, 0070-00015, 3 each
 1/2" seal-tite connector is integral to transmitter

Note:

1. Total resistance added to the line for voltage generation and readouts should be less than 495 ohms for proper operation with 25.5 volts, intrinsic safe limit for most barriers.
2. Digital liquid-level indicator cannot use or generate more than 250 VAC.

See [WD-565](#) for Control Drawing

Note: For installation instructions see DS-873
 For Installation Packet see DS-1443
 For additional Installation Instructions see DS-1445
 For Style of Safety Barrier see 0146S00001

* Materials and specifications are subject to change without notice.
 Pressure ratings subject to change due to temperature and other environmental considerations.

WARNING! This sensor is not to be used as the primary means of determining high or low fuel condition. It must not be used in the absence of redundant systems in critical applications where there may be significant safety risk or financial exposure in the event of fuel overfill or fuel exhaustion condition. This sensor is not to be used for tank filling.

07/18/2017